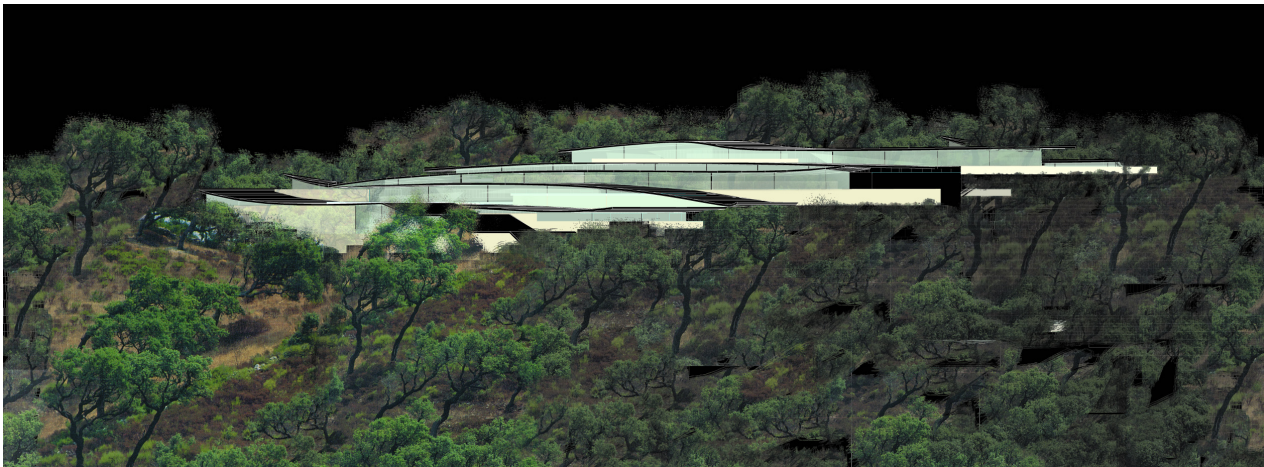
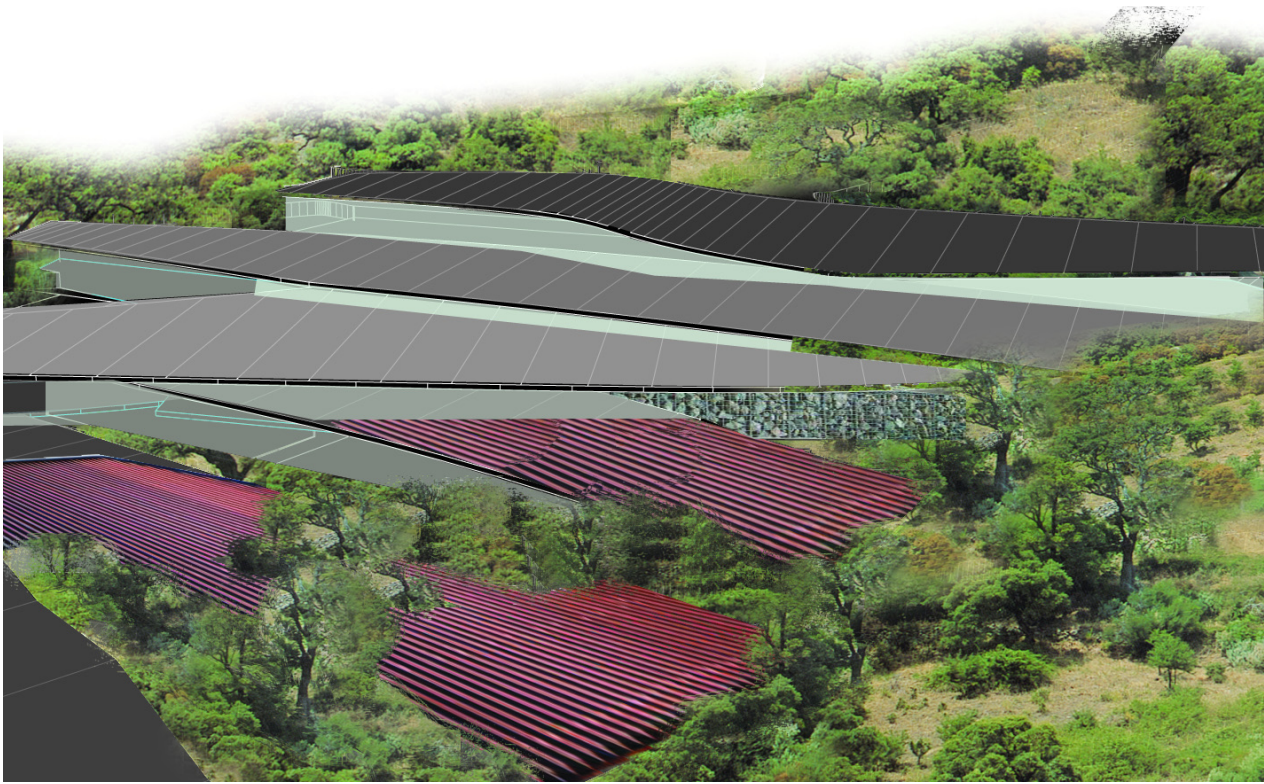


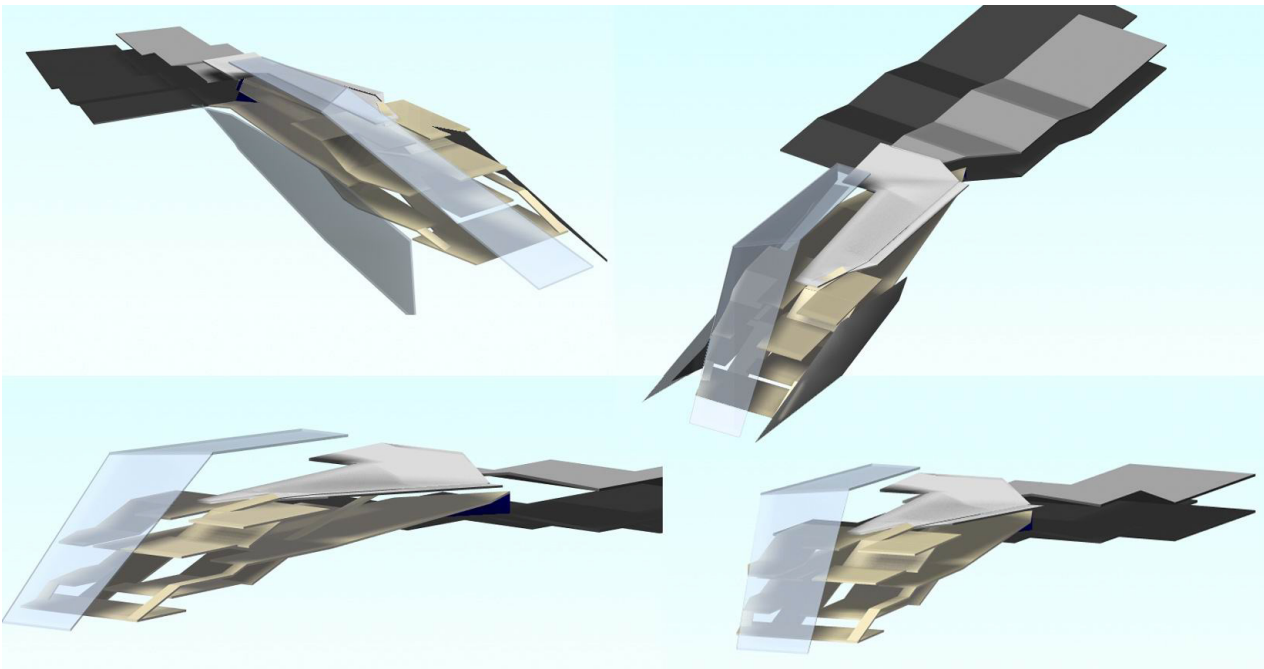
Salauna International Conference Resort, Tempio Pausania

Dutch philosopher Fons Elders commissioned Iranian-American architect Michele Saeë to design a conference resort that is intended to become a 'centre of world cultures'.

ITALY — TEXT: HANS IBELINGS



↑ Michele Saeë's design conforms to the rocky, hilly terrain.

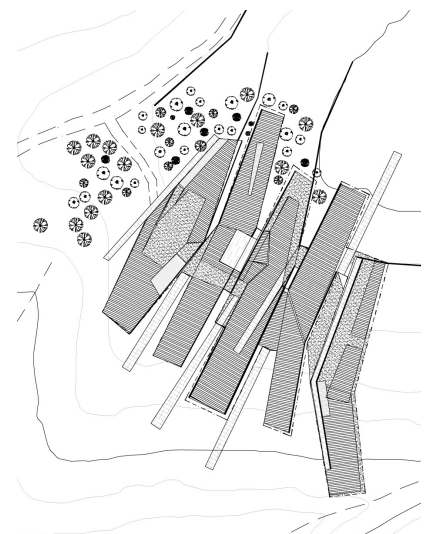


In the mountainous landscape of northern Sardinia, in the province of Galurìa, fifty kilometres from the Costa Smeralda and the harbour and airport of Olbia, Salauna International Conference Resort plans to open its doors in 2006/2007. The resort is situated at the foot of 1359 metre-high Mount Limbara and next to a 20,000 hectare nature reserve, an ideal location for conferencing, study, retreat, and cultural and eco tourism.

The centre is an initiative of Dutchman Fons Elders, a professor of philosophy who in 1990 founded the Forum 2001 Foundation and who lives up to his dictum that 'the border of our imagination is the border of our reality'. In the 1980s Elders was the driving force behind the construction of The House of the Four Winds, an idealistic housing project in Amsterdam, designed by Superstudio architect Piero Frassinelli. Forum 2001's ambition is to contribute to a European renaissance in the wake of the fall of the Iron Curtain, and to European cultural unification. Furthermore, it aims to draw attention to the exceptional cultural significance of the Mediterranean area and to stimulate understanding of and insight into value systems that operate worldwide. The conference resort is intended to function as a centre of world cultures.

Iranian-American architect Michele Saeë has designed a centre that unfolds into the landscape, becoming part of it owing to its curves and to the interaction between indoor and outdoor spaces, including an amphitheatre. Apart from conference facilities, the resort contains 120 hotel rooms and quarters for artists and writers in residence. The centre aims to generate exchanges between the different target groups: corporate managers and executives, NGOs, university faculties, academies – who may use the centre for conferences, management training and so on – individual scholars and artists involved in the centre's special courses, and tourists. ←

Info: www.michelsaeë.com, www.fonselders.nl



↑ The resort contains study, research, conference and meditation facilities, a library, multimedia room, exhibition space and dormitory.

← The resort is characterized by spatial continuity.